



Australian Government

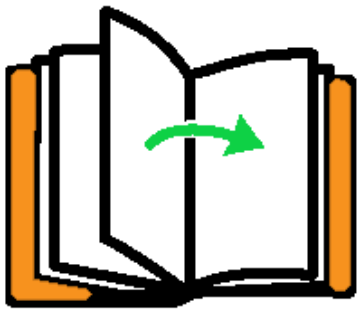
 Your  
Career™  
National Careers Institute



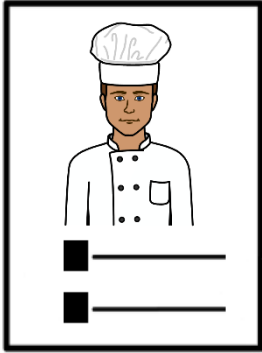
**You want to work.**

**Help you can get.**

**For people with disability.**

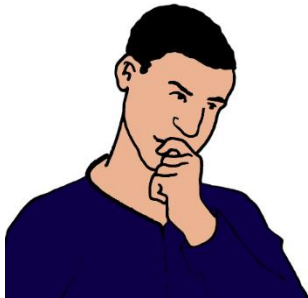


Go to the next page.

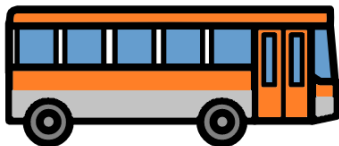


You want to work. Like you want to be a cook.

You need a plan. Like how will you get that job?



It can be hard. There is a lot to think about.



You may need to think about

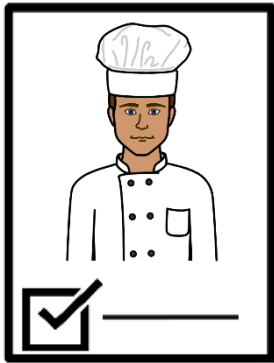
- where you want to live
- how you will get to work
- how you will pay for things.



You may have an NDIS team.

They can help you make a plan.

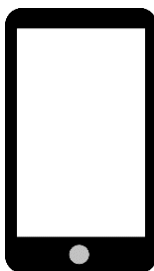
**And**



They can help you be ready to work.

We call it

School Leaver Employment Supports.



**Call** the NDIS.                      1800 800 110.

**Tell them**

- you have left school
- you want help to be ready to work.

**Ask** for

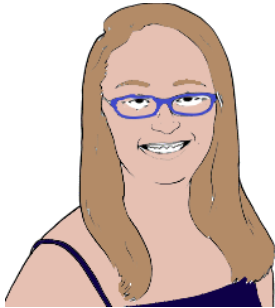
School Leaver Employment Supports.

Sun	Mon	Tue	Wed	Thur	Fri	Sat

They are open each week day.



## You can join a group



You are a young person. You are

- more than 14 years old
- less than 26 years old.

Like you are 18 years old.



You can join the DREAM group.

CYDA run the group.

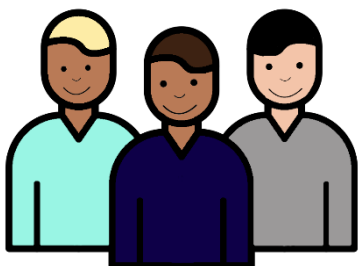
CYDA stands for Children and Young People  
with Disability Australia.



They have online meetings. Like on zoom.



You may hear about different jobs.



You may

- learn how to be a leader
- meet some bosses.



**Call** CYDA. 1800 222 660

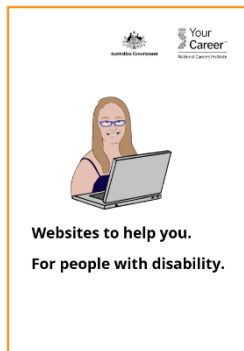
**Ask** to join the DREAM group.



Sun	Mon	Tue	Wed	Thur	Fri	Sat

They are open each week day.

**Or**



**Read**

Websites to help you. For people with disability.

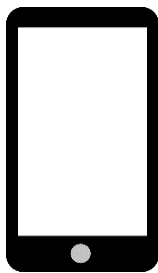
Go to page 4.



## More places you can get help



Centrelink



**Call** 132 850.

**Ask for** Disability employment services.

Sun	Mon	Tue	Wed	Thur	Fri	Sat

They are open each week day.

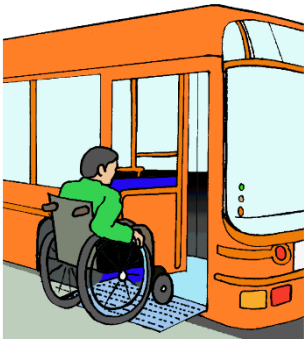


## Disability Gateway



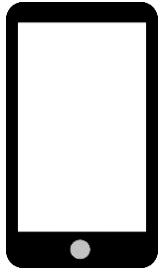
You can ask them any question.

They tell you about help you can get.



Like help to get to work.

It may be a bus you can use.



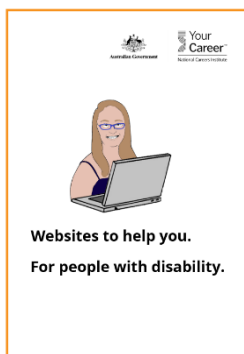
**Call**

1800 643 787.

Sun	Mon	Tue	Wed	Thur	Fri	Sat

They are open each week day.

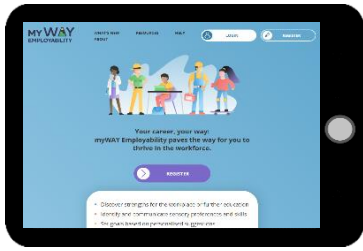
**Or**



**Read**

Websites to help you. For people with disability.

Go to page 6.



## My Way

It is for people with autism.

It is a website about work.



It has lots of things you can read.

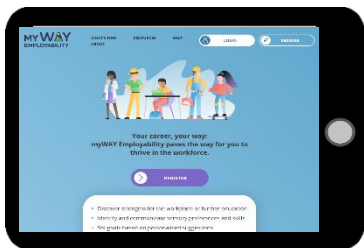
It helps you think about work.



**Email**

[hello@mywayemployability.au](mailto:hello@mywayemployability.au)

**Or**



**Go to**

[www.mywayemployability.au](http://www.mywayemployability.au).



It can be hard to use.

You can ask for help. Like

- from your dad
- from NDIS staff.

# Job Access

Driving disability employment

## JobAccess



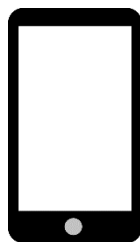
You want support to help you

- find a job
- keep a job.



There may be things you need.

Like a switch on your computer.



JobAccess can help you.

**Call** 1800 464 800.

**Job Access**

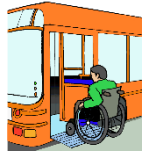
Driving disability employment

Sun	Mon	Tue	Wed	Thur	Fri	Sat

They are open each week day.

# Images

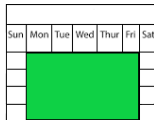
We can use the images from



- CHANGE [www.changepeople.org](http://www.changepeople.org)
- Inspired Services



- Picto-Selector
- Noun Project



- SocialBuzz
- Tobii Dynavox.

We can use the logos in this book.



Based on content from

Support for young people with disability. Your guide to education, training and work.

National Careers Institute

Australian Government. January 2024.

[www.yourcareer.gov.au/schoolleaver](http://www.yourcareer.gov.au/schoolleaver)



**Access**  
Easy English

Access Easy English wrote the Easy English.

June 2024.