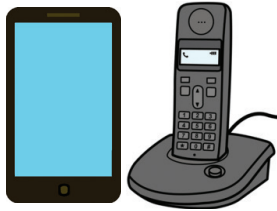
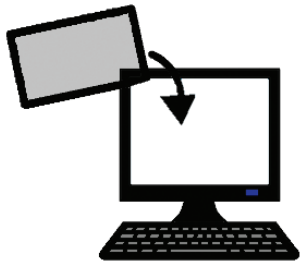




More Information



Call 1300 226 278.



Email

basscoast@basscoast.vic.gov.au

National

Call 1300 555 727.

Relay

TTY Call 133 677.

Service

Text 0423 677 767.



Our plan.

Bass Coast.

2021 to 2025.

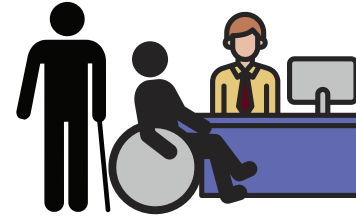




Our community is for every one.

You may

- live
- work
- come to Bass Coast Shire.



There are places to help you.

We want better services for people with a disability.



Your community is

- safe to use
- easy to use.



This can be

- more jobs for you
- and
- health services you can use.



We will check all parts of your community.

We will make it easy to use.



We talk with people with disabilities.

You tell us what you need.

We listen to you.